

CHARACTERIZATION OF REGIONAL APPEARANCE CHANGES IN EARLY BRAIN DEVELOPMENT

Avantika Vardhan, Marcel Prastawa, Guido Gerig

EARLY BRAIN GROWTH

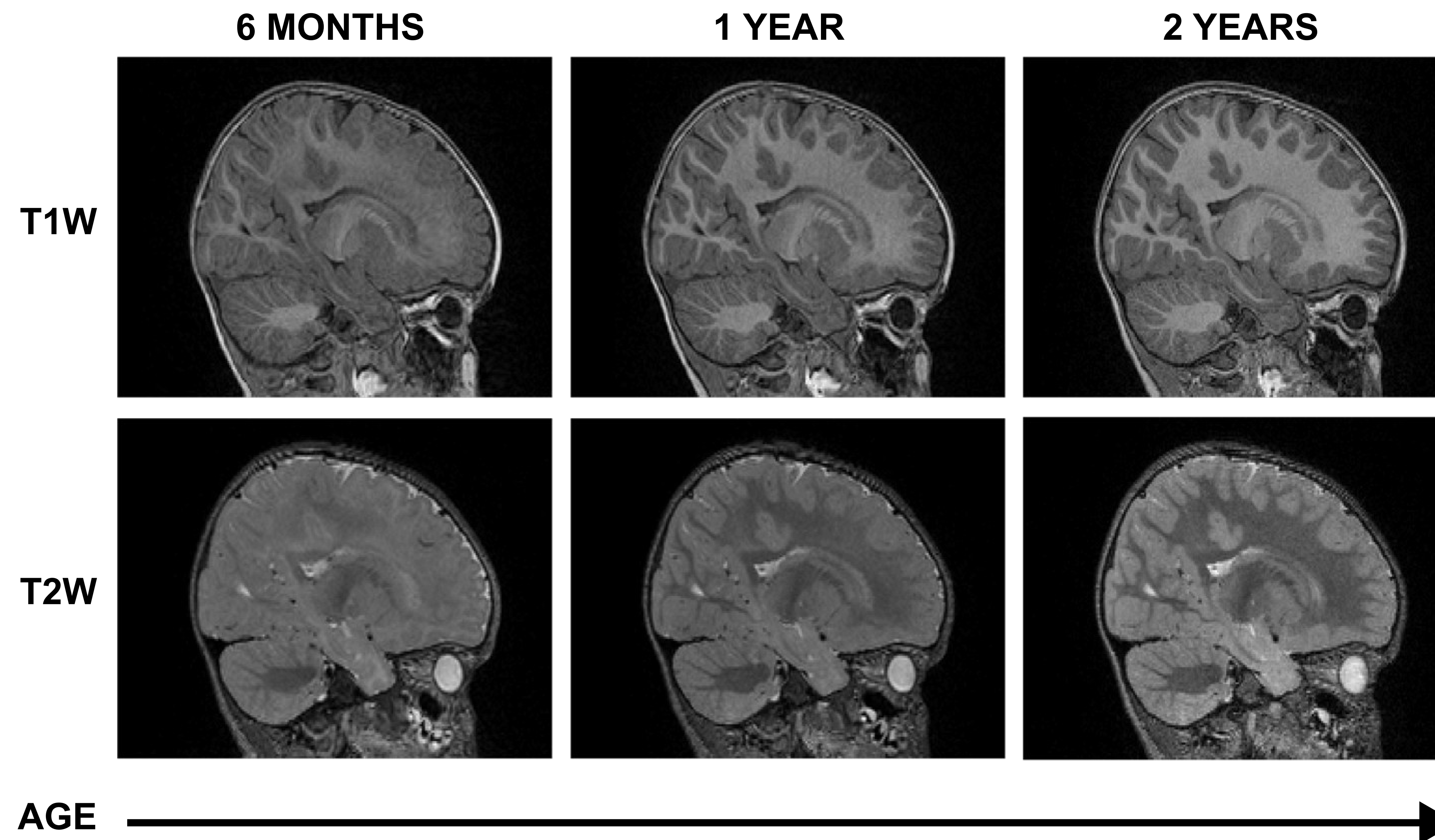
- Major changes in brain MRI images are seen from birth to 2 years.
- Different brain regions grow at varying rates.

MOTIVATION

- Analysis of early brain growth is crucial to understand origin and nature of developmental disabilities and to predict onset of disease.

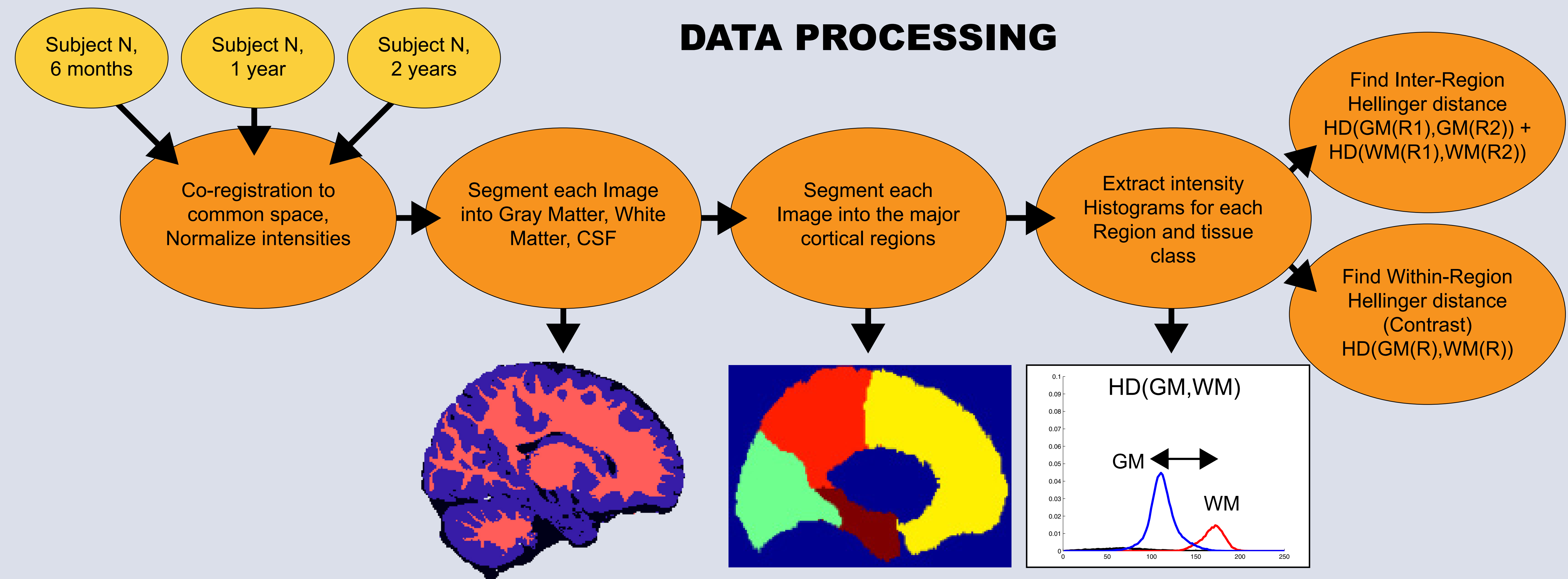
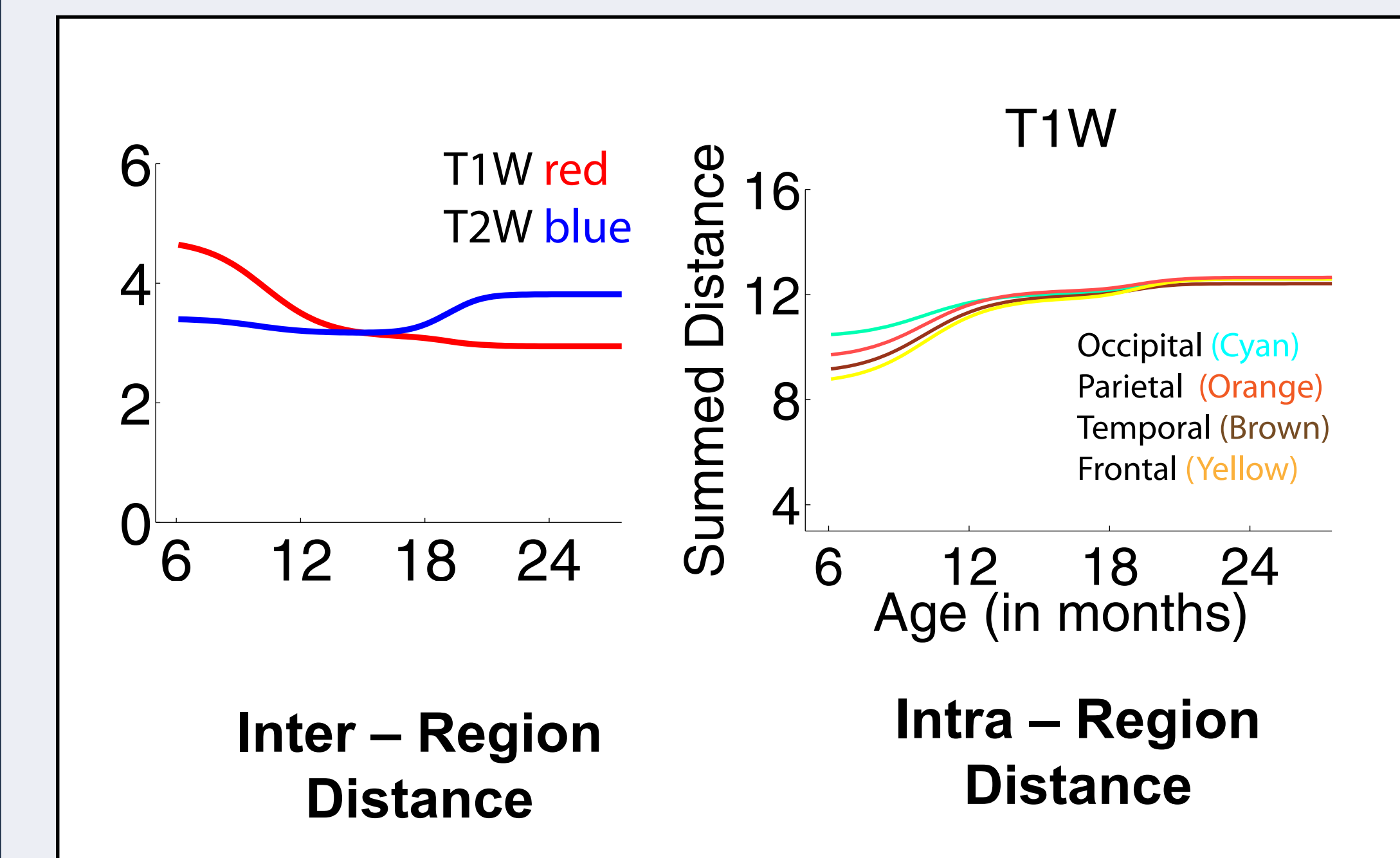
APPEARANCE CHANGES

- Regional contrast and intensity changes indicate brain maturation patterns.
- Quantifying these contrast and intensity changes for different modalities (T1W, T2W) could help us analyze brain growth and build normative growth models.



RESULTS

- The results show the change in inter and intra region distance over time.



Acknowledgments : This work was supported by NIH grant RO1 HD055741(ACE, project IBIS).